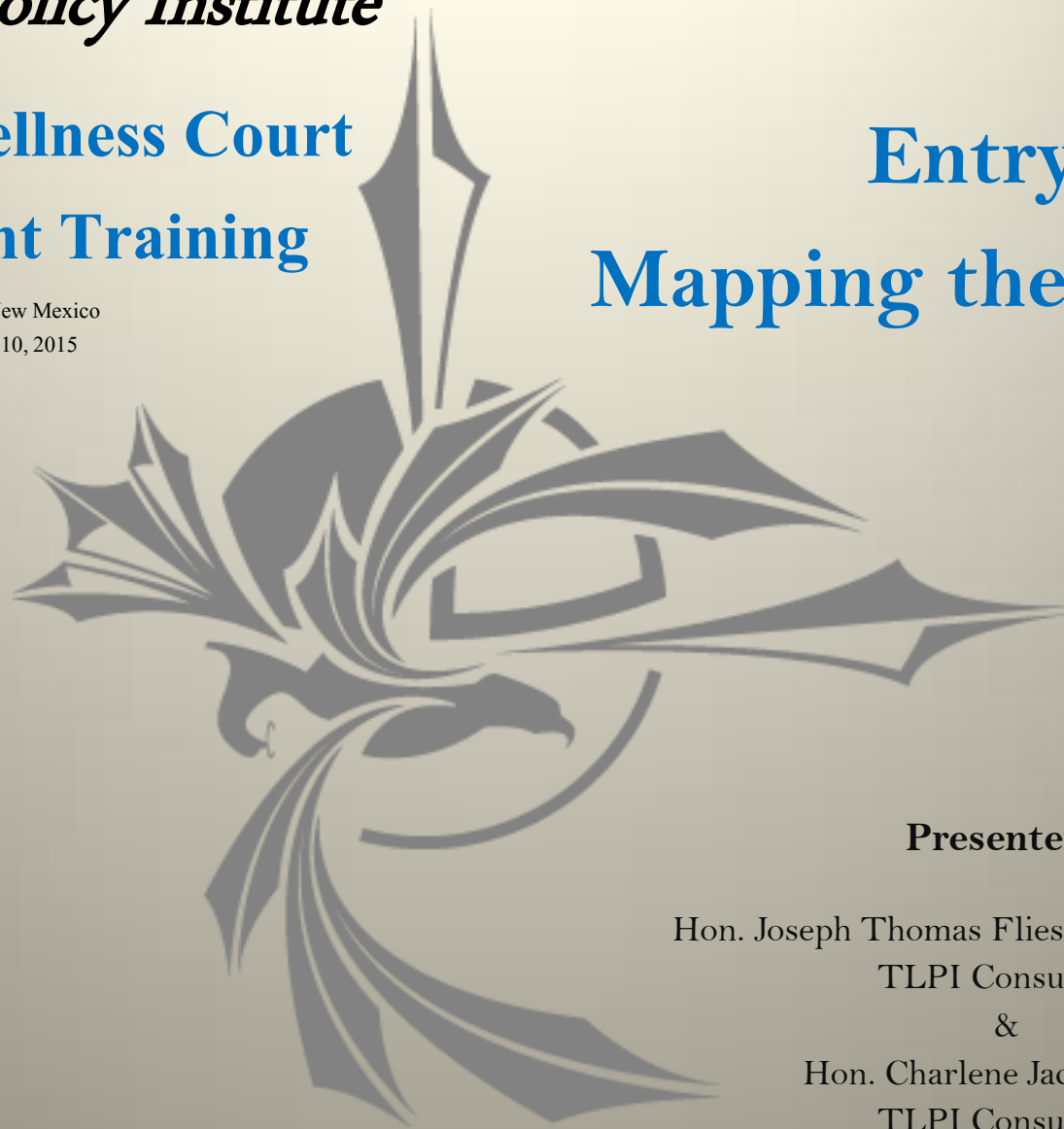


Tribal Law & Policy Institute

Healing to Wellness Court Enhancement Training

Albuquerque, New Mexico
September 8-10, 2015

Entry: Mapping the Process



Presenters:

Hon. Joseph Thomas Flies-Away, J.D., M.P.A.

TLPI Consultant

&

Hon. Charlene Jackson, J.D.

TLPI Consultant

Overview

- **Introductions** (Who are we/Why are we here?)
- **Wellness Court Principles & Practices of “Entry”**
- **Wellness Court Processes & Procedures that sustain “Entry”**
- **Flow Charts, Bench Cards, & Encouragement**
- **1st – A Brief Key Component Review**

**QUICK REVIEW OF
THE 10 KEY COMPONENTS**

Sustained
Team, Community &
Nation Building

Team, Community &
Nation Building

Entry

Eligibility

Healing &
Treatment

Support &
Supervision

Discipline &
Encouragement

Respectful
Communication

Keeping &
Telling Stories

Enduring Knowledge
& Experience

QUICK REVIEW OF KEY COMPONENT ROLES

Team, Community &
Nation Builder
(Communicator)

Team, Community &
Nation Builder
(Co-Convener)

Life-long Teacher
& Learner

Protector of Rights

Story Teller & Evaluator

Sentry & Gate Keeper

Team Member

Champion for
Health & Wellness

Enforcer & Encourager
(co-case manager)

Encourager & Enforcer
(co-case manager)

Team, Community & Nation Building

PRINCIPLES/PERFORMANCE & PROCESSES-PROCEDURES

Community Need Recognized?

(community identification/recognition of problem/crisis)

Healing Resources – Tx Identified?

Team Designated & Empowered?

Plan to Sustain Community Connection?

Key Component # 1

Individual & Community Healing Focus

Tribal Healing to Wellness Courts brings together alcohol and drug treatment, community healing resources, and the tribal justice process by using a team approach to achieve the physical and spiritual healing of the individual participant and to promote

**PRINCIPLES/PERFORMANCE &
PROCESSES-PROCEDURES**

Entry

Identifying & Referring a Case
Who can Refer?

Initiating & Processing a Case
Who files/submits application/request

Written Processes/Procedures (flow charts/diagrams)
Distinguish Legal v. Programmatic

Case Transfer (local/foreign-W/NEIGHBOR SOVEREIGN)
Specific Steps of Transfer
----Exercising Sovereignty----

()

Key Component # 2

Referral Points & Legal Process

Participants enter the Tribal Wellness Court through various referral points and legal processes that promote tribal sovereignty and the participant's due (fair) process rights.

**PRINCIPLES/PERFORMANCE &
PROCESSES-PROCEDURES**

Who or What (people/cases)?

(the target population & problem to address)

Eligibility

Capacity (resources) to serve population?

Screening/Screeners readily available

(who's responsible?, trained?, strategically placed?)

Choice or Coercion (Readiness to Change)

Decision-Making (Judge/Team Together?)

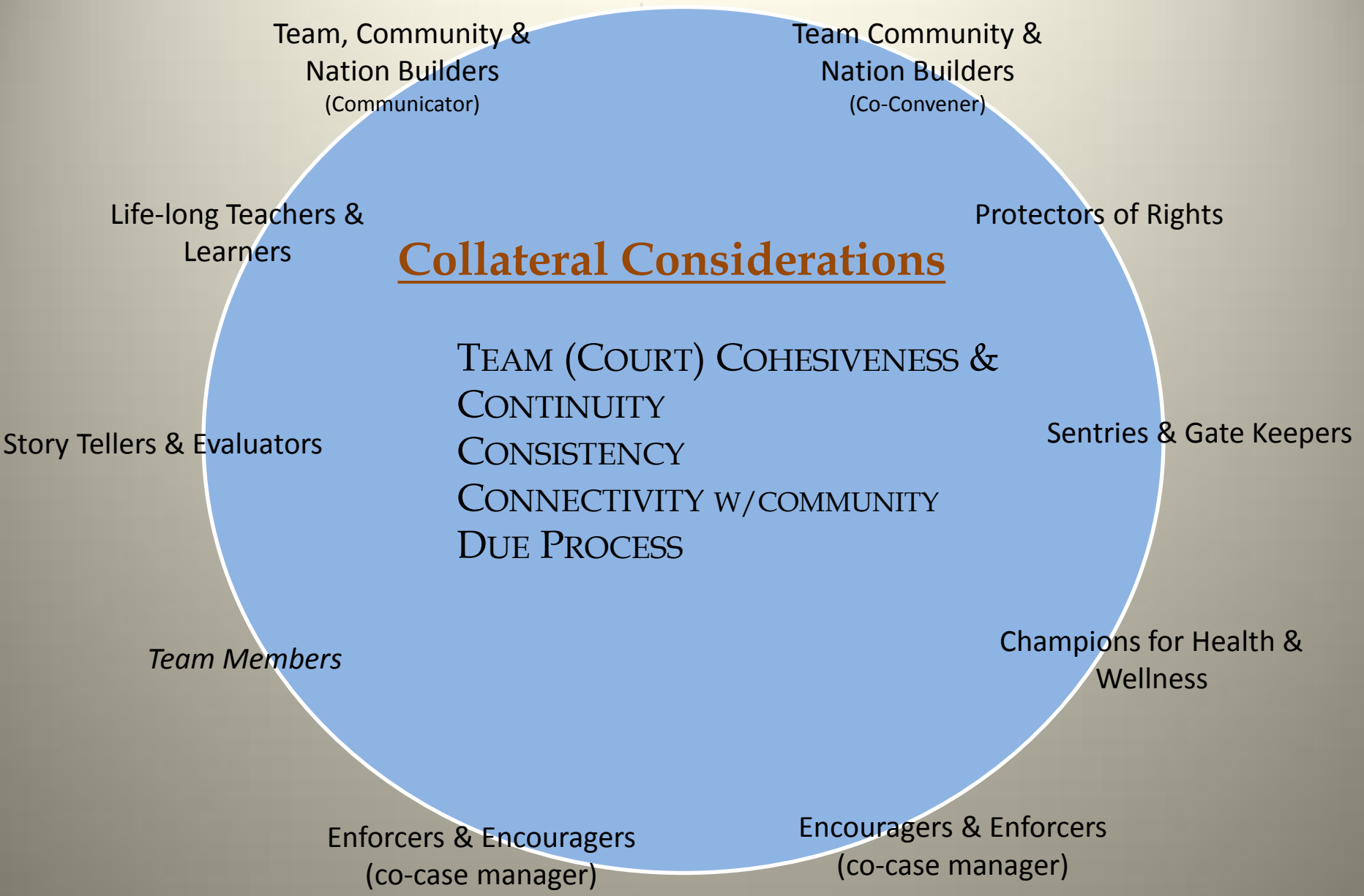
Key Component # 3

Screening & Eligibility

Eligible court-involved substance-abusing parents, guardians, juveniles, and adults are identified early through legal and clinical screening for eligibility and are promptly placed into the Tribal Wellness Court.

Draw/Diagram How cases enter your Wellness Court
Beginning with Incident/Arrest/Recognition, etc.





Team, Community &
Nation Builders
(Communicator)

Team Community &
Nation Builders
(Co-Convener)

Life-long Teachers &
Learners

Protectors of Rights

Collateral Considerations

TEAM (COURT) COHESIVENESS &
CONTINUITY
CONSISTENCY
CONNECTIVITY W/COMMUNITY
DUE PROCESS

Sentries & Gate Keepers

Story Tellers & Evaluators

Team Members

Champions for Health &
Wellness

Enforcers & Encouragers
(co-case manager)

Encouragers & Enforcers
(co-case manager)

WalkingOnCommonGround.org

The screenshot displays the homepage of the WalkingOnCommonGround.org website. At the top, a dark blue banner features a logo with a scale of justice and two gavel icons, alongside the text "WALKING ON COMMON GROUND" and "RESOURCES FOR PROMOTING AND FACILITATING TRIBAL-STATE-FEDERAL COLLABORATIONS". Below the banner is a navigation menu with links for Home, Background, About Us, Contact Us, and Partners, along with a search bar. A central content area includes a featured article titled "Tribal-State Court Listserv in Development - Please Join!" with a sub-headline and a "More" link, accompanied by a photograph of a group of people. To the right of the article are five blue buttons: News, Events, Promising Strategies, Resources/Tools, and BJA Tribal Technical Assistance (PDF). Below this is a horizontal menu for "Tribal-State Collaborations" with sub-categories: Judicial, Law Enforcement, Detention, Multiple Agency Agreements, Child Welfare, and Other. The bottom section is titled "SEARCH BY TRIBE:" and includes a search bar, a list of search filters (Indian Nations, Tribal Justice Systems, Tribal Jurisdiction, Tribal-Federal Collaborations, Tribal Court Clearinghouse), and a map of the United States with state abbreviations.

For More Information . . .

TLPI believes in providing resources free of charge, or at minimal cost, whenever possible.

Visit www.tlpi.org

Contact:

Lauren van Schilfgaarde, Lauren@tlpi.org